

# **Secured Environment Company**

## **Executive Summary**

**272 Farley Street**

**Mountain View, CA 94043**

**(415) 310-6929**

**[www.securedenviron.com](http://www.securedenviron.com)**



# Secured Environment Overview

## Primary Team:

Eddie Leung, Founder/CEO  
Ruth Fisher, PhD

## Support Team:

James Caldwell, PhD  
Stephen Cheung, PhD  
Alex Cannara, PhD  
Wilson Chandra  
William Stevenson  
Fred Greguras, JD

## Consulting Areas:

Environmental  
- Finance  
- Investment  
- Regulation  
- Security

## IP Co-inventors:

Eddie Leung, Former  
Environmental Strategist,  
GE Nuclear Energy  
Ruth Fisher, Founder of  
QuantAA, author of  
*Winning the Hardware-  
Software Game*

## The Business:

Our energy and emissions assessment methodology brings together advances in strategic planning, environmental economics, data modeling, analytics, and software design to accurately determine the quantity and value of energy usage and associated emissions from power generation (fossil fuel and nuclear fuel) and energy consumption activities undertaken for people/goods movement.

## The Market:

Our business supports clients' energy supply chain assessments by simplifying complex energy scenarios and validating market and operational data inputs.

## The Product:

Our process determines the quantity and value of energy usage and associated emissions. Our software integrates into clients' existing technology infrastructure.

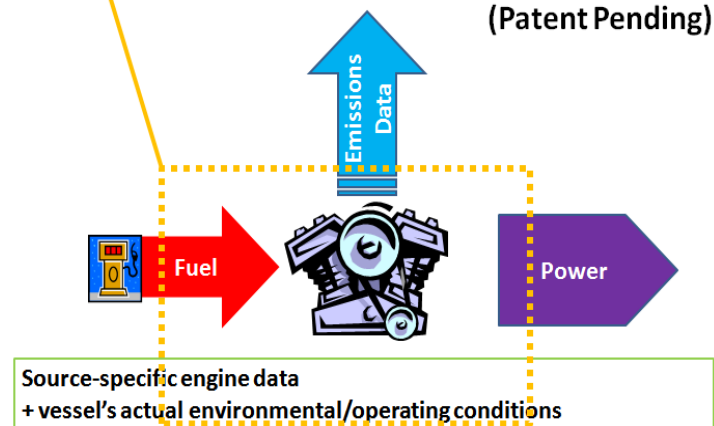
## The Business Model:

Quantification/evaluation services and/or technology licensing.

**The Technology:** Our software draws from clients' historical/static and real-time/dynamic databases. Real-time quantification enables early warning (abatement alternatives) of monitored energy usage and emissions levels.

## The Technology

Pollutant Emissions Abatement Qualifications  
(Patent Pending)



# Emissions Quantification

## Pollutant Prices Linked to Market Price of CO<sub>2</sub>e

Contributing Team  
Members:

Edward Leung  
CEO - Environmental Strategies

Ruth Fisher, PhD,  
VP - Economics

James Caldwell, PhD  
VP - Environmental Evaluation  
& Energy Recovery

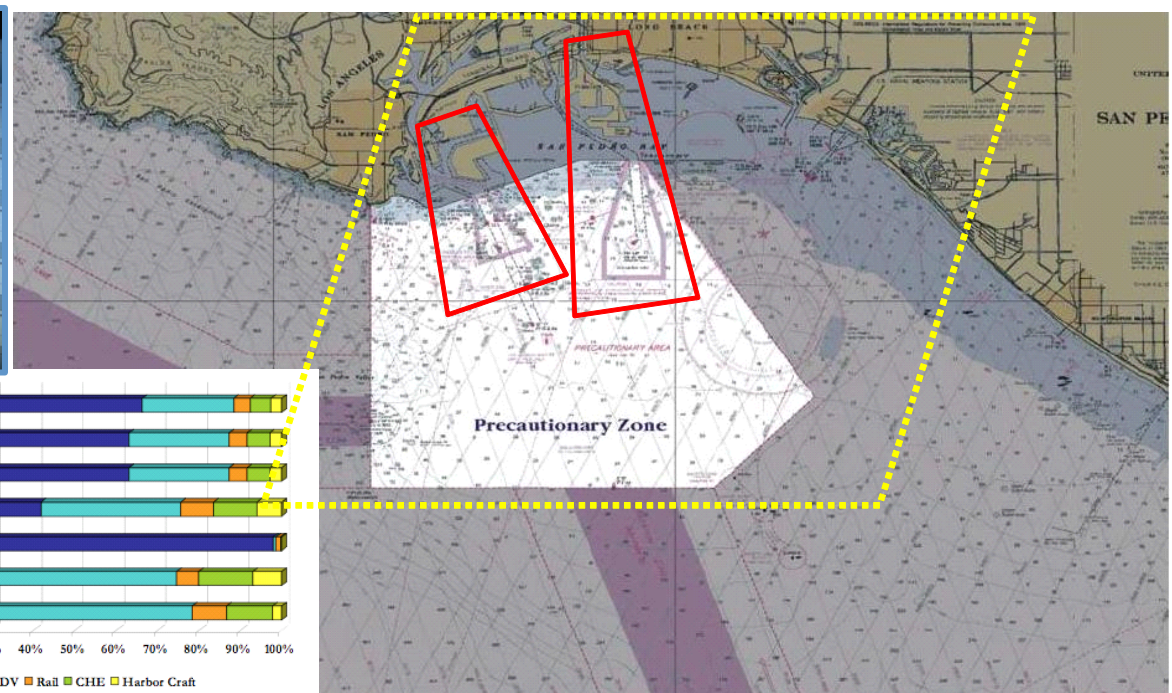
Wilson Chandra  
VP - Strategic Planning  
Digital Environmental/  
Inventory Control

Stephen Cheung, PhD  
Advisor - Computation & Control  
Technology

Fred Greguras, JD  
Advisor - Legal



A scientific way of quantifying emissions for entire region and each operation



# Full Emissions Accounting

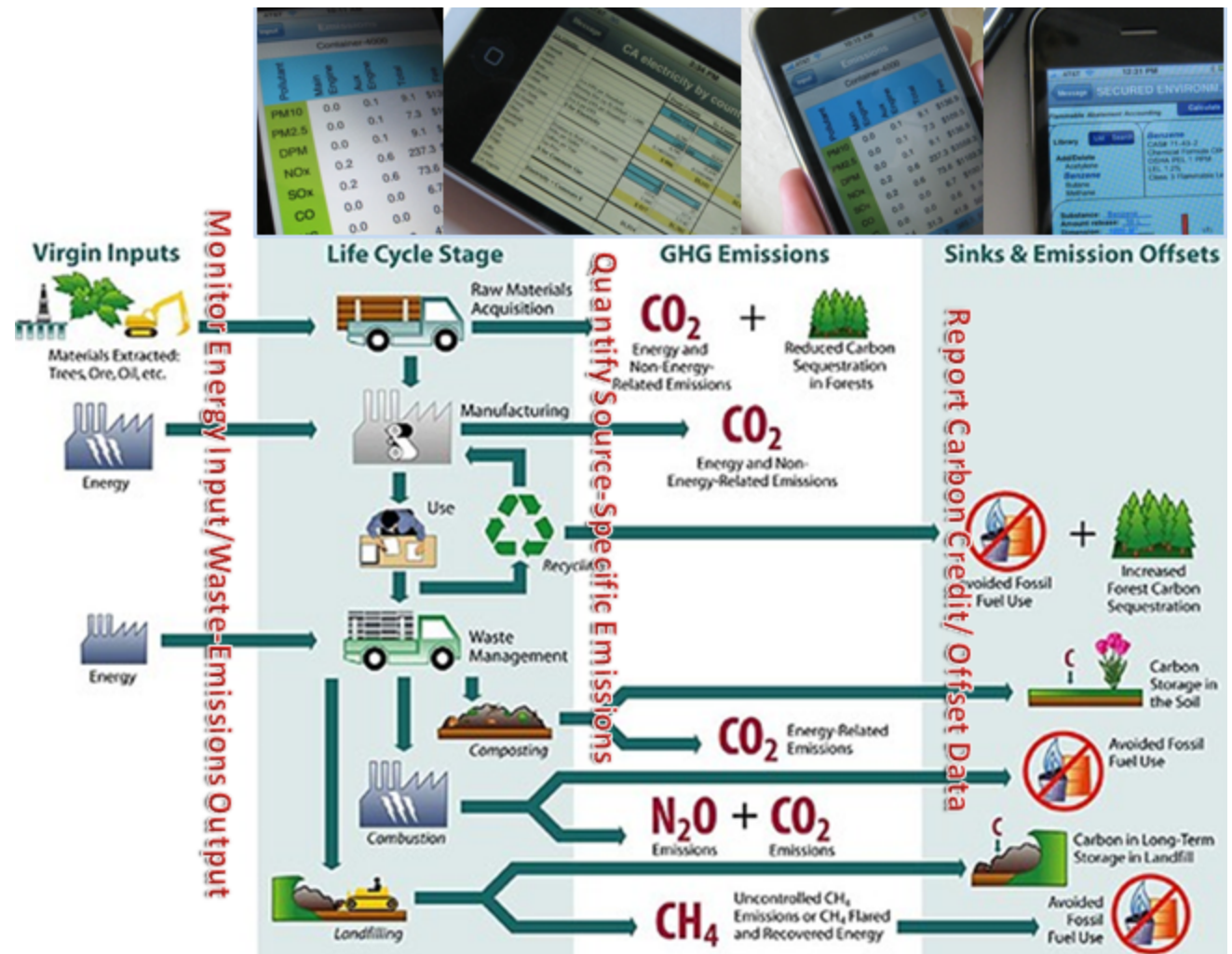
## GHG Life Cycle Analysis

Contributing Team  
Members:

Edward Leung  
CEO - Environmental Strategies

Ruth Fisher, PhD  
VP - Economics

Stephen Cheung, PhD  
Advisor - Computation/  
Control Technology



# Energy Supply Chain Management

## Fuel Cost Recovery Computation

### Fuel Consumption by Region

Contributing Team

Members:

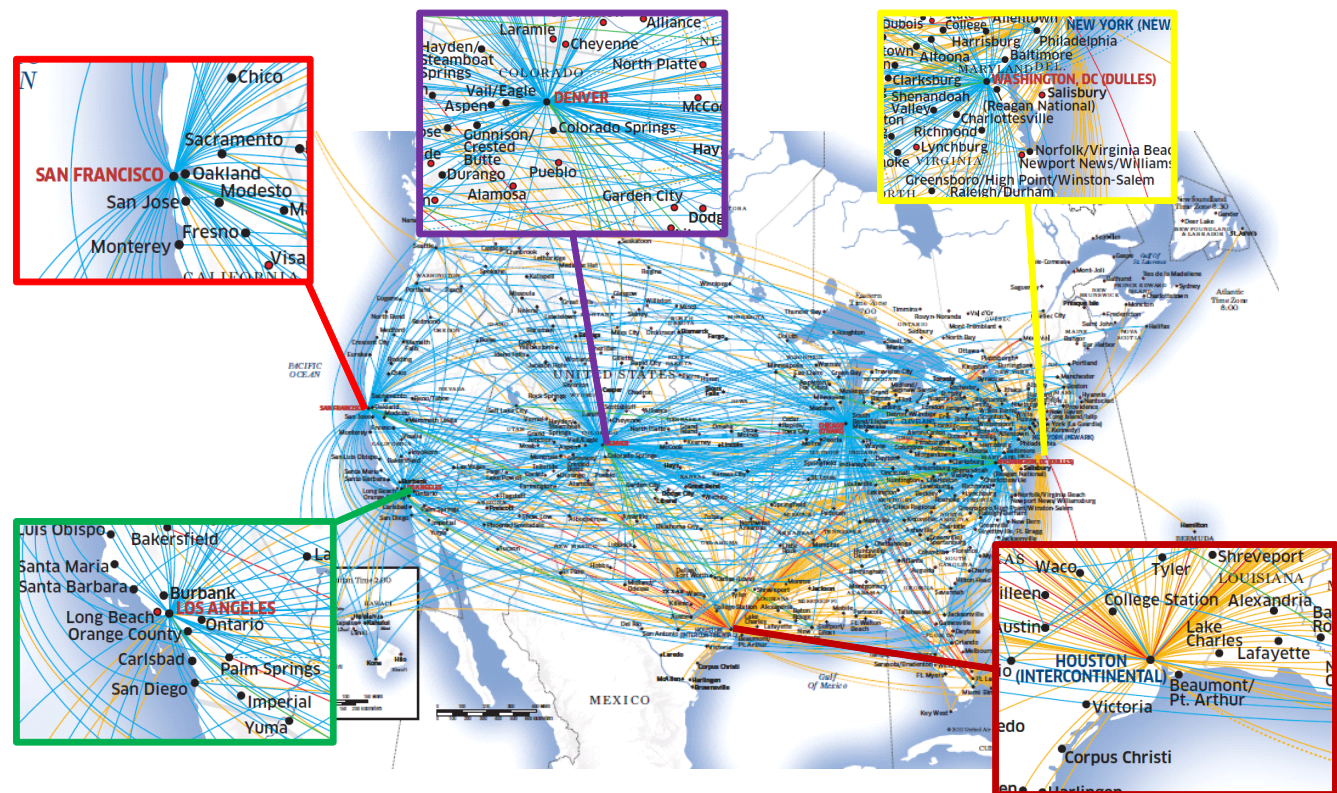
**Edward Leung**  
CEO - Environmental Strategies

**Ruth Fisher, PhD**  
VP - Economics

**Alex Cannara**  
VP - Applied Environmental  
Modeling Energy and Security

**Stephen Cheung, PhD**  
Advisor - Computation/  
Control Technology

**Fred Greguras, JD**  
Advisor - Legal



# Energy Recovery Quantification

## Plastic Vortex, Pacific Ocean

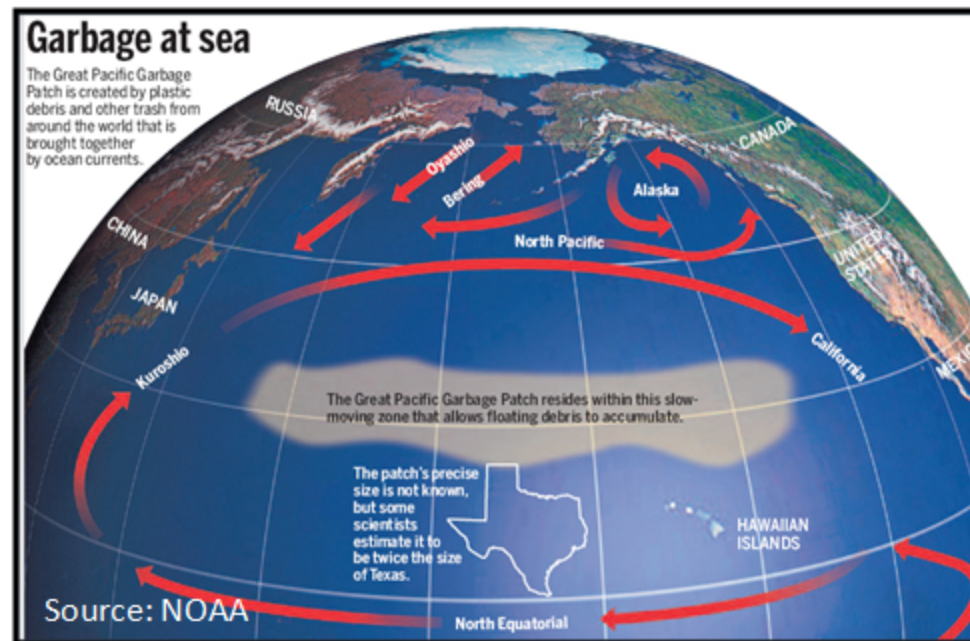
### Contributing Team Members:

Edward Leung  
CEO - Environmental Strategies

Ruth Fisher, PhD  
VP - Economics

James Caldwell, PhD  
VP - Environmental Evaluation & Energy Recovery

Stephen Cheung, PhD  
Advisor - Computation/  
Control Technology



Most people believe **green** programs cost more because they will reduce environmental harms such as pollutant emissions and traffic congestions. **But is that really the case?**

### Quantifying the Unrealized Revenues:

#### Garbage Recovery at Sea or Sports Event Parking Emissions

**Secured Environment™ Software** will assess the energy content for the scientists to identify the financial sustainable methodology in recycling the energy from the "Plastic Vortex". Our quantification methodology will help your organization to accurately project the value the unrealized revenues of the entire energy supply chain from waste recycling to sports event emissions value calculations

# Total Energy Supply Chain Analysis

## Macau, China

### Contributing Team Members:

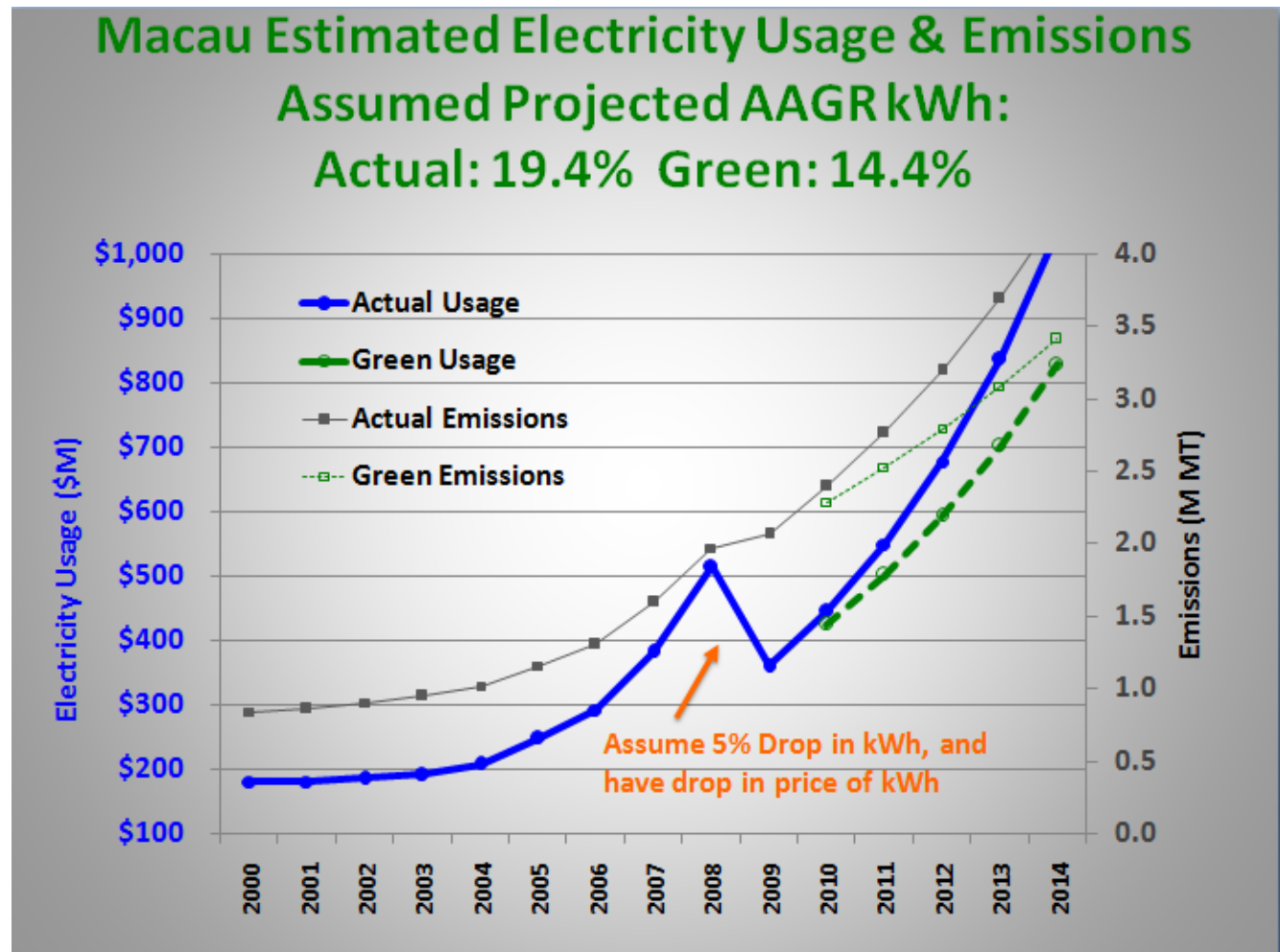
**Edward Leung**  
CEO - Environmental Strategies

**Ruth Fisher, PhD**  
VP - Economics

**James Caldwell, PhD**  
VP - Environmental Evaluation & Energy Recovery

**William Stevenson**  
VP - Alternative Energy

**Stephen Cheung, PhD**  
Advisor - Computation/  
Control Technology



# Green Building ROI Evaluation

## Contributing Team Members:

**Edward Leung**  
CEO - Environmental Strategies

**Ruth Fisher, PhD**  
VP - Economics

**James Caldwell, PhD**  
VP - Environmental Evaluation & Energy Recovery

**Alex Cannara**  
VP - Applied Environmental Modeling Energy and Security

**Stephen Cheung, PhD**  
Advisor - Computation/  
Control Technology

